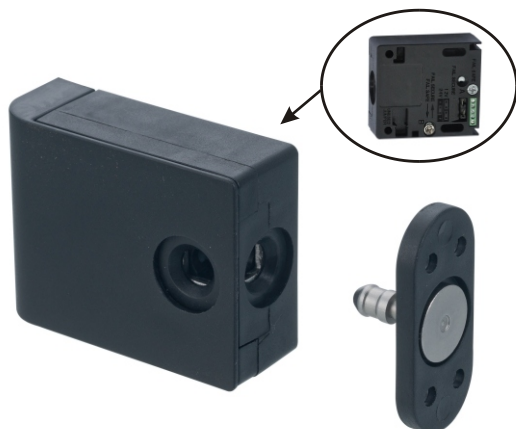


# CL-50 Cabinet Lock



- Compact and easy to install, suitable for drawer, cabinet, locker and etc.
- Adjustable fail-safe (power to lock) or fail-secure (power to open), according to user's need.
- Door position state output to detect door location (open or close door.)
- Dual-mounting directions available for user to choose.
- Adjustable DC12V /DC24V dual-voltage design.
- Maximum of 100 kg holding force.

## Specification

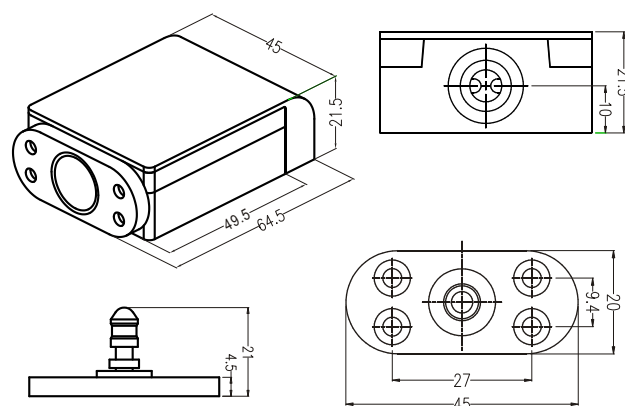
Power Supply	DC 12V/24V $\pm$ 15%
Current Consumption	150 MA@12VDC $\pm$ 15%
	75 MA@24VDC $\pm$ 15%
Signal Output	Door position detection (COM/NO/NC)
Application	Mailbox 、Drawer 、Locker
Door leaf width	> 25cm
Holding force	100Kg(220 lbs)
Lock Type	Fail-safe or fail-secure(adjustable)
Mounting	Front or side
Operation Environment	Temperature 0-80°C , Humidity 85% Rh max
Weight	335g(G.W.)

## Model

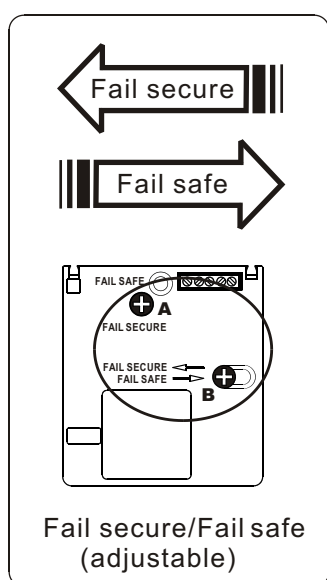
CL-50 : With door position detection output.  
 ※ This unit does not come with any other series.

## Dimensions

Unit:mm



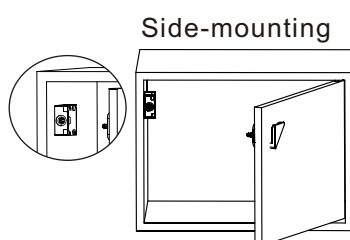
## Structure Diagram



Locker

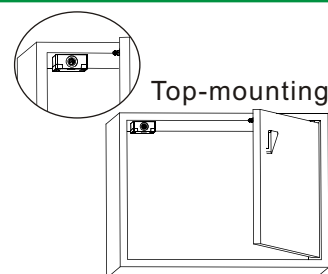
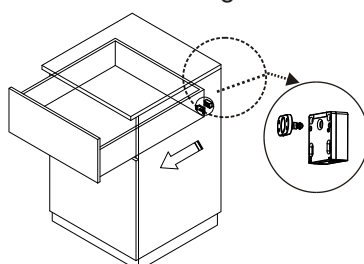


File drawer



Side-mounting

Drawer-mounting



Top-mounting

Maximum gap has to be less than 2 mm.

