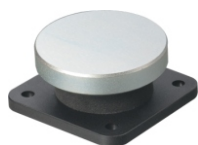




DH-65



DH-65T Adjustable
Time Delay available



Special features

- Use of metal for the unit's outer case for its durability.
- Two models available to select (DH-65/DH-65T)
- Built-in computer control board with door close delay function(DH-65T).
- Suitable for security door and all types of 90° door.
- Built-in demagnetizer design. Instant demagnetization when power is off.
- Power saving function design. No power consumption when both armature and electromagnetic door holder do not attach with each other .
- Power Supply: DC12V or DC24V (adjustable)
- Holding force:145lbs(65Kg).

Specification

	DH-65 DH-65R	DH-65T DH-65TR
Operation current	96mA@12V 49mA@24V	113mA@12V 71mA@24V
Power saving function	Available	×
Door Close Delay Time	×	Adjustable 5mins to 10mins
Lock status sensor	NO & NC	×
Power Supply	DC 12V or DC24V ±15%	
Application	Fire door and all types of 90° door	
Holding forces	145lbs (65Kg)	
Immediate Power Off push button	Available	
Demagnetizer	Instant demagnetizer when power is off	
Mounting methods	Wall mounting	
Weight	800g (included wrapping)	

Series Model

- DH-65 : Use as emergency exit door. It usually remains door open status. It automatically releases the door leaf to prevent the spread of smoke indoors to make sure the emergency channel remain smoke-free when fire occurs.
- DH-65R: Equipped with DH-65 functions. It comes with an adjustable armature. It is suitable for the angle which is more than 5° between the door leaf and the wall.
- DH-65T: Use as holding the door for a while and then automatically releasing it. It is suitable for resident or warehouse door.
- DH-65TR: Equipped with DH-65T functions. It comes with an adjustable armature. It is suitable for the angle which is more than 5° between the door leaf and the wall.

Application

- DH-65 : 1.Emergency exit (smoke-free channel use)
2.Ordinary door(replace ordinary magnetic door stopper)
- DH-65T: Warehouse or ordinary door.(it holds the door when frequent access, and releases automatically after some time)
- DH-65R/DH-65TR:

Control board

<p>Back</p> <p>Voltage adjusting jump</p> <p>12V</p> <p>24V</p>	<p>Back</p> <p>Door close delay time button</p> <p>Voltage adjusting jump</p> <p>12V</p> <p>24V</p>
DH-65 / DH-65R	DH-65T / DH-65TR

Dimensions

Unit: mm

<p>Lock body</p>	<p>Armature</p>	<p>Adjustable Armature</p>
------------------	-----------------	----------------------------

Structure diagram

