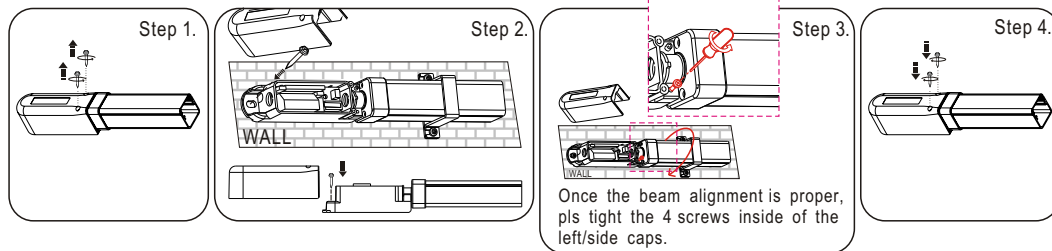


Manual of Barrier (Curtain) Sensor - *Swivel Housing*

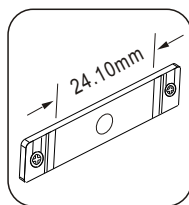
Standard Installation:



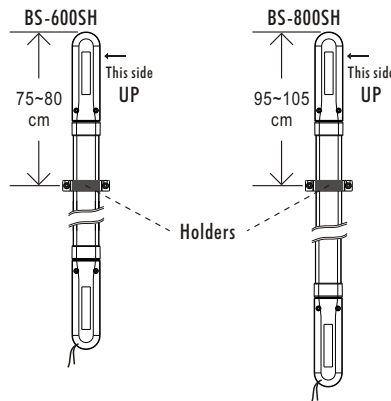
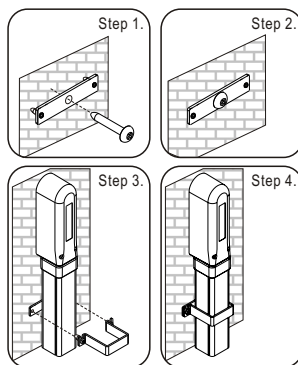
Stable holders (Only BS-600SH/BS-800SH include the following holders)

Ideal position for mounting the holders (Only BS-600SH/BS-800SH include the holders.)

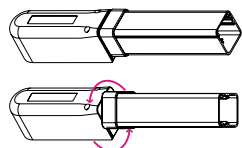
Stable holders sizes



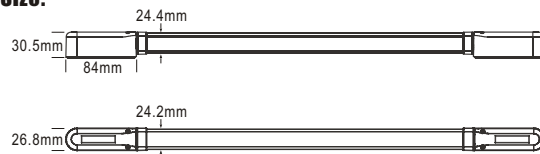
Installation of Stable holders



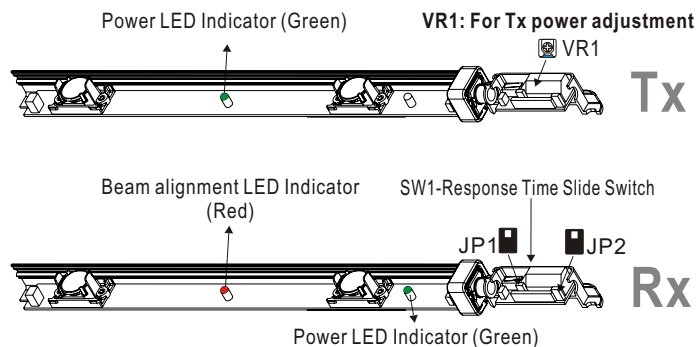
Swivel Housing:



Size:



Internal View:



JP1: Buzzer alarm (for beam alignment)
 ※Remove JP1: cancel the function after beam aligned properly
 JP2 Jumper closed: 1 beam broken alarm (2 sec.) Function existed.
 JP2 Jumper opened: 1 beam broken alarm (2 sec.) function removed.

Manual of Barrier (Curtain) Sensor - *Swivel Housing*

BS-200SH / BS-400SH / BS-600SH / BS-800SH

BS-200SH: 2 Beams - 57 cm long.

BS-400SH: 4 Beams - 105 cm long.

BS-600SH: 6 Beams - 153 cm long.

BS-800SH: 8 Beams - 201 cm long.

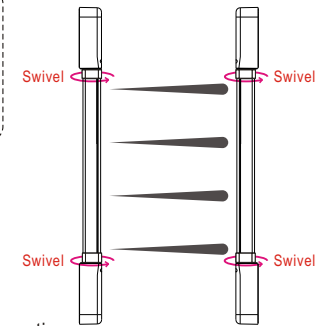
BS-00SH-

=2 or 4 or 6 or 8 beams

=B or W

B: Black finish housing

W: White finish housing



Applications:

- Indoor / Outdoor perimeter security system
- Window, Door. When the mounting space is limited
- Internal / External protection / Terrace / Sliding door

Features:

- **Swivel Housing**
- Aluminum housing / PC Resin anti-UV cover / ABS side cap.
- Anti-tamper circuit triggers alarm if power is cut or end cap is removed.
- Slim aluminum housing, anti high-low temperature / fog / rains.
- 2 or 4 / 6 / 8 separate photoelectric beam sensors. Programmable trigger on simultaneous breaking of any single / 2 adjacent beams or 2 adjacent beams broken only -- selected by JP2 on Rx's side cap
- Terminal block connection.
- Alarm: Break one or two adjacent beams.
- Tx power adjustment: By VR1 (ON Tx's side cap).
- Sensing range: 12 meters (39 ft.) -- outdoor Max. 24 meters (78 ft.) -- indoor Max.
- N.O./N.C./Common relay output.
- Mounting hardware included.
- No synchronizing wires required.
- LED indicator alignment.
- Tamper switch.

Specifications:



| | |
|---|--|
| Sensing range | 12 meters (39 feet) max.-outdoor / 24 meters (78 feet) max.-indoor |
| Input Voltage | 10-24VDC |
| Detection method | Break one beam or two adjacent beams (1) 1 beam: 2 seconds alarm (2) 2 adjacent beams: immediately ***1 beam broken alarm trigger function can be removed; See (JP2) which located at Rx's side cap; (JP2) Jumper closed: 1 beam broken alarm (2 sec.) function existed. (JP2) Jumper opened: 1 beam broken alarm (2 sec.) function removed. |
| Signal output | Normal open / Normal close / Common relay output |
| Response Time (Rx) | 50/100/150/200 ms (selectable - by SW1 slide switch-Rx) |
| Contact rating | 3A 125VAC |
| Tx Power Adjustment (by VR1) | (a) when turn clockwise: become stronger (b) when turn counter-clockwise: become normal |
| Wiring Connection | Terminal block (See page 4) |
| Power Led indicator | Green Led (On both Tx/Rx unit) On : powered Off : no power |
| Led indicator for Beam alignment | Red Led (On Rx unit) On : when beam is broken ; Off : when beam is aligned properly |
| Buzzer Alarm (for beam alignment) Black jumper1(JP1)(ON Rx)unit | (a) On : when sensor is connected with DC power & before beam alignment is done. (b) Off : when beam aligned properly ; automatically. ***This function can be cancelled by JP1 removed*** |
| Tamper Switch | 4 pcs/each set ; 2 on both sides of Tx/2 on both side of Rx |
| Operating Temp | -25°C~55°C (-49°F~131°F) |
| Dimensions | W: 35 mm / H: 30 mm / L: see following |
| Humidity | 90% |

Manual of Barrier (Curtain) Sensor - *Swivel Housing*

Manual of Barrier (Curtain) Sensor - *Swivel Housing*

Consumption current

▶ One beam broken continued 2 seconds alarm triggered **Cancelled.**
("JP2" jumper opened)

| Conditions | BS-200SH | | BS-400SH | | BS-600SH | | BS-800SH | |
|--------------|----------|--------|----------|--------|----------|--------|----------|--------|
| | Tx | Rx | Tx | Rx | Tx | Rx | Tx | Rx |
| Beam Aligned | 22.1mA | 39.8mA | 24.7mA | 42.5mA | 27.4mA | 44.9mA | 29.9mA | 47.3mA |
| Beam Broken | 22.1mA | 16.8mA | 24.7mA | 19.2mA | 27.4mA | 21.7mA | 29.9mA | 24.2mA |

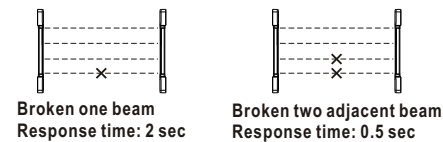
▶ One beam broken continued 2 seconds alarm triggered **Existed.**
("JP2" jumper closed)

| Conditions | BS-200SH | | BS-400SH | | BS-600SH | | BS-800SH | |
|--------------|----------|--------|----------|--------|----------|--------|----------|--------|
| | Tx | Rx | Tx | Rx | Tx | Rx | Tx | Rx |
| Beam Aligned | 22.1mA | 40.4mA | 24.7mA | 43.1mA | 27.4mA | 45.4mA | 29.9mA | 47.9mA |
| Beam Broken | 22.1mA | 17.4mA | 24.7mA | 19.8mA | 27.4mA | 22.3mA | 29.9mA | 24.8mA |

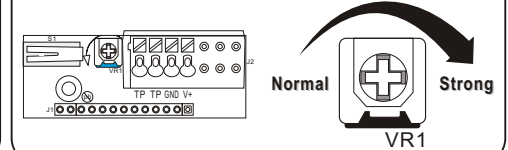
Sensing range V.S. Sunlight

| Sunlight(Lux) | Sensing Range |
|---------------|---------------|
| < 30,000 | 8meters |
| < 40,000 | 7meters |
| < 50,000 | 6meters |
| < 60,000 | 5meters |
| < 70,000 | 4meters |
| < 80,000 | 3meters |

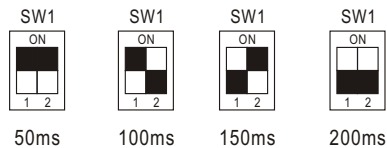
Response Time



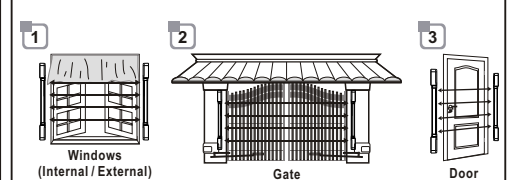
VR1 (On Tx Side Cap)



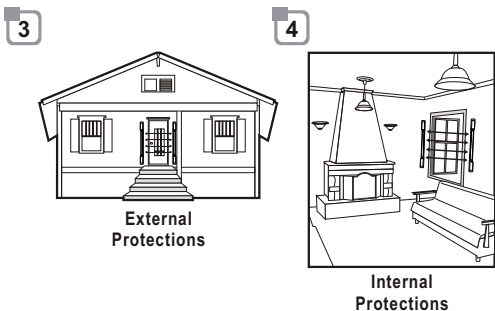
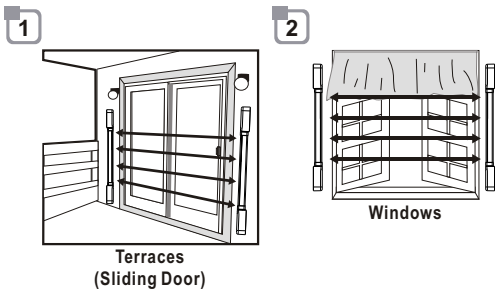
Response Time Adjustment (SW1-Rx)



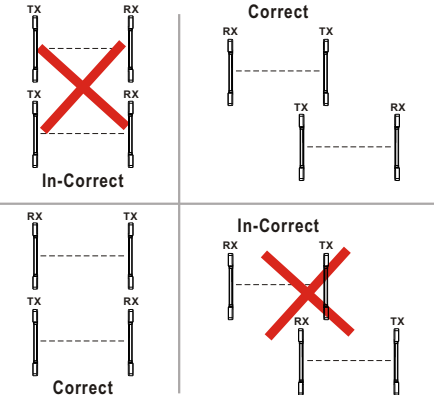
Typical Installations



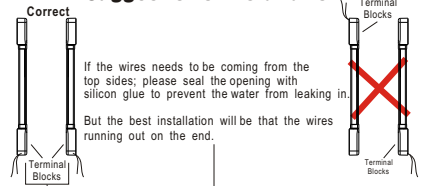
Applications



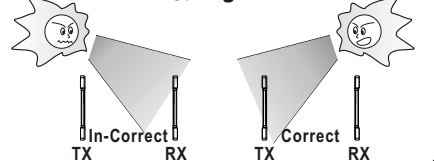
Installation Notes



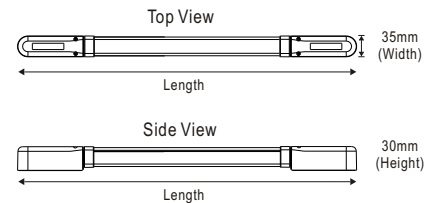
Suggestion of installation



Sunlight



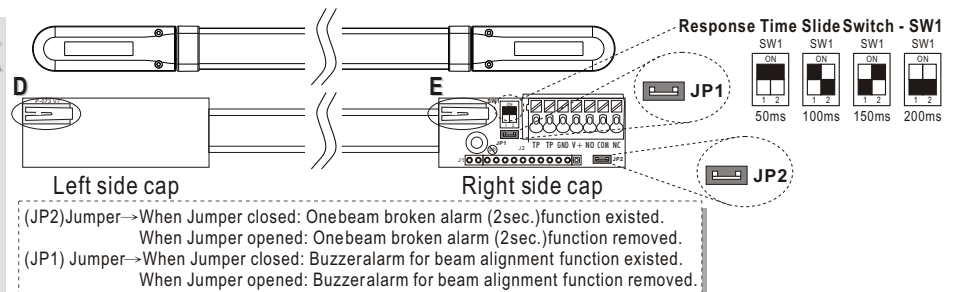
Dimensions



Length

| Item | Beams | Length (cm) |
|----------|-------|-------------|
| BS-200SH | 2 | 57 |
| BS-400SH | 4 | 105 |
| BS-600SH | 6 | 153 |
| BS-800SH | 8 | 201 |

Rx



Tx

